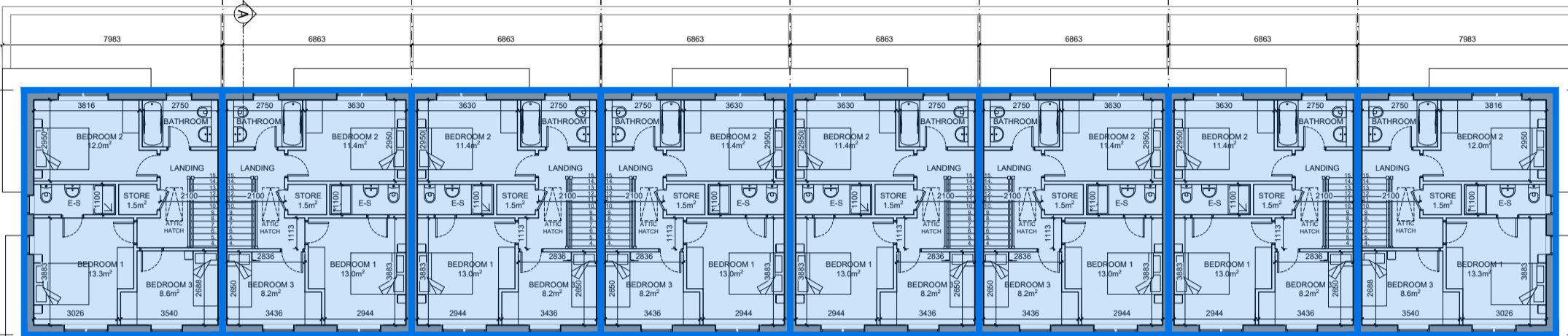
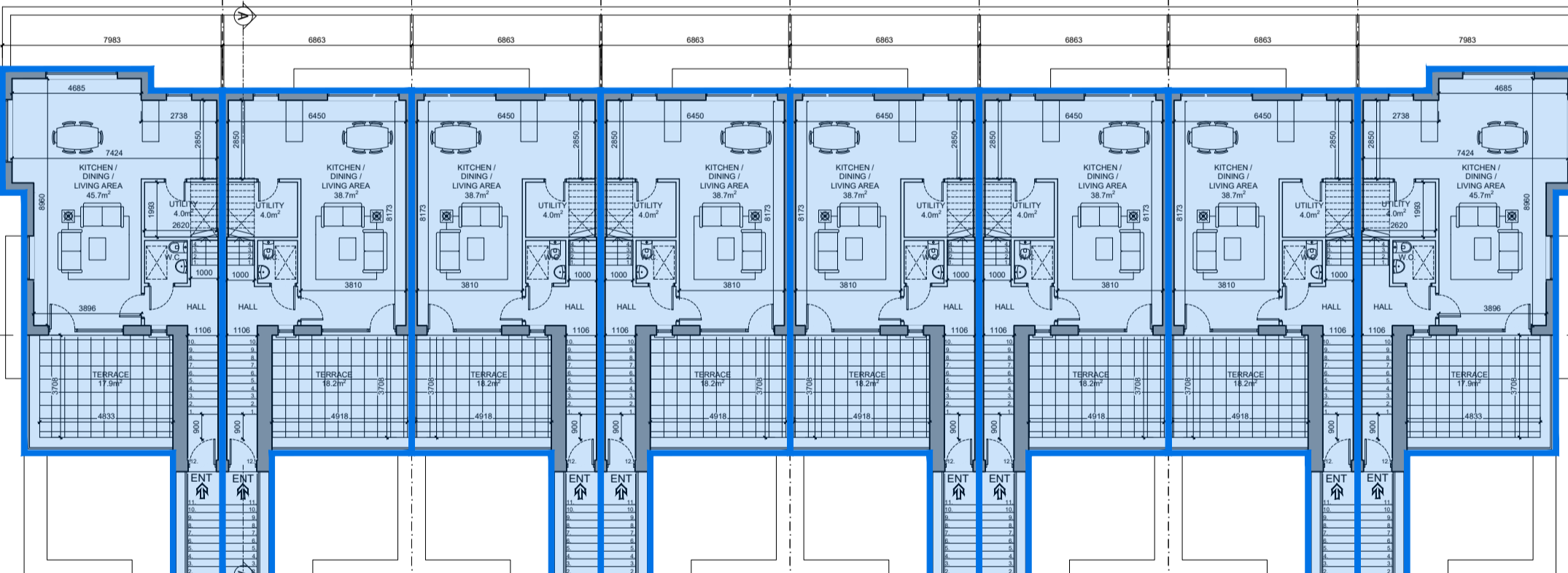


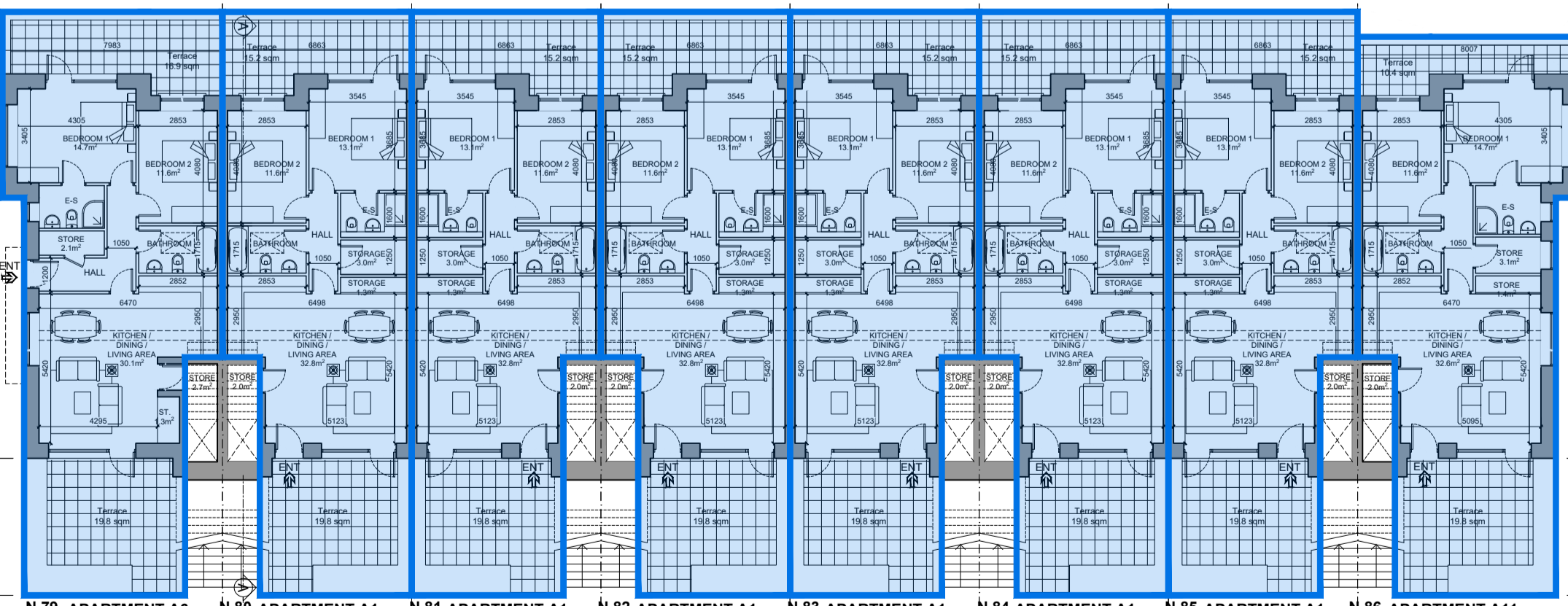
ATTIC PLAN - Units Types: A7-A3-A3-A3-A3-A3-A7 (minimum usable storage area per unit as indicated)



N.87 DUPLEX A7 SECOND FLOOR PLAN 2F Area = 54.6 m² (O/A Area 120.5 m²)
 N.88 DUPLEX A3 SECOND FLOOR PLAN 2F Area = 53.1 m² (O/A Area 111.4 m²)
 N.89 DUPLEX A3 SECOND FLOOR PLAN 2F Area = 53.1 m² (O/A Area 111.4 m²)
 N.90 DUPLEX A3 SECOND FLOOR PLAN 2F Area = 53.1 m² (O/A Area 111.4 m²)
 N.91 DUPLEX A3 SECOND FLOOR PLAN 2F Area = 53.1 m² (O/A Area 111.4 m²)
 N.92 DUPLEX A3 SECOND FLOOR PLAN 2F Area = 53.1 m² (O/A Area 111.4 m²)
 N.93 DUPLEX A3 SECOND FLOOR PLAN 2F Area = 53.1 m² (O/A Area 111.4 m²)
 N.94 DUPLEX A7 SECOND FLOOR PLAN 2F Area = 54.6 m² (O/A Area 120.5 m²)



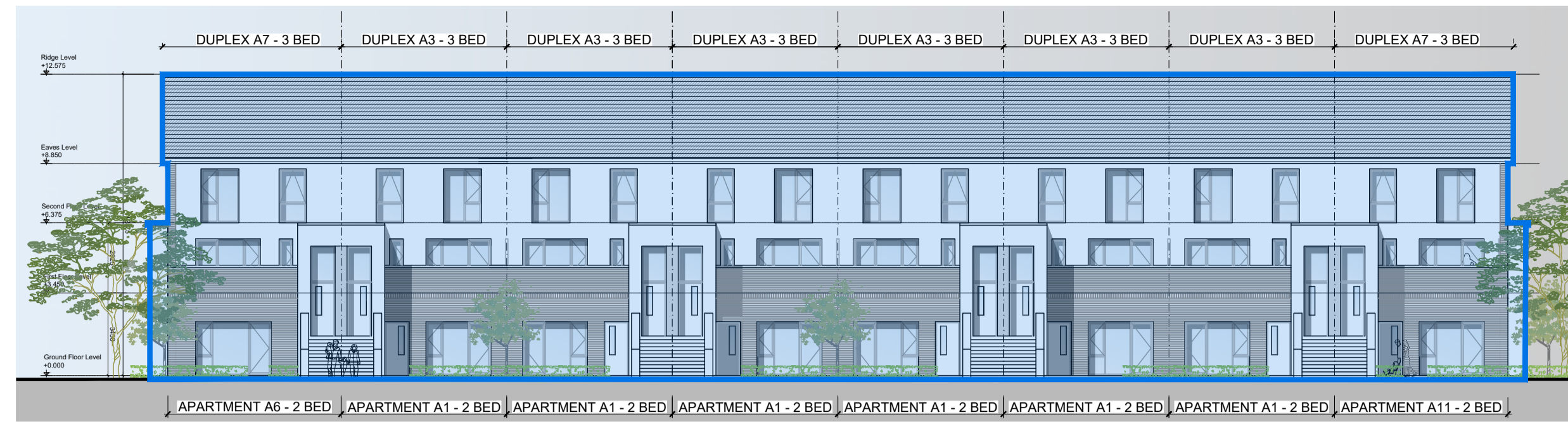
N.87 DUPLEX A7 FIRST FLOOR PLAN 1F Area = 65.9 m² (O/A Area 120.5 m²)
 N.88 DUPLEX A3 FIRST FLOOR PLAN 1F Area = 58.3 m² (O/A Area 111.4 m²)
 N.89 DUPLEX A3 FIRST FLOOR PLAN 1F Area = 58.3 m² (O/A Area 111.4 m²)
 N.90 DUPLEX A3 FIRST FLOOR PLAN 1F Area = 58.3 m² (O/A Area 111.4 m²)
 N.91 DUPLEX A3 FIRST FLOOR PLAN 1F Area = 58.3 m² (O/A Area 111.4 m²)
 N.92 DUPLEX A3 FIRST FLOOR PLAN 1F Area = 58.3 m² (O/A Area 111.4 m²)
 N.93 DUPLEX A3 FIRST FLOOR PLAN 1F Area = 58.3 m² (O/A Area 111.4 m²)
 N.94 DUPLEX A7 FIRST FLOOR PLAN 1F Area = 65.9 m² (O/A Area 120.5 m²)



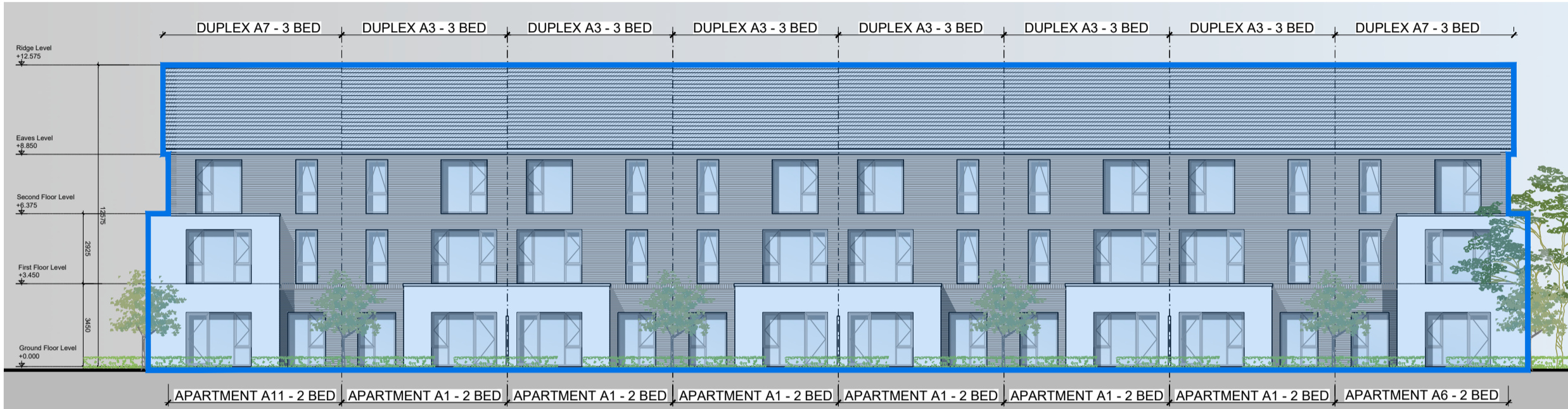
N.79 APARTMENT A6 GROUND FLOOR PLAN Area = 84.3 m²
 N.80 APARTMENT A1 GROUND FLOOR PLAN Area = 82.0 m²
 N.81 APARTMENT A1 GROUND FLOOR PLAN Area = 82.0 m²
 N.82 APARTMENT A1 GROUND FLOOR PLAN Area = 82.0 m²
 N.83 APARTMENT A1 GROUND FLOOR PLAN Area = 82.0 m²
 N.84 APARTMENT A1 GROUND FLOOR PLAN Area = 82.0 m²
 N.85 APARTMENT A1 GROUND FLOOR PLAN Area = 82.0 m²
 N.86 APARTMENT A11 GROUND FLOOR PLAN Area = 84.3 m²

DUPLEX BLOCK H_GROUND, FIRST SECOND FLOOR AND ATTIC PLAN SCALE 1:200

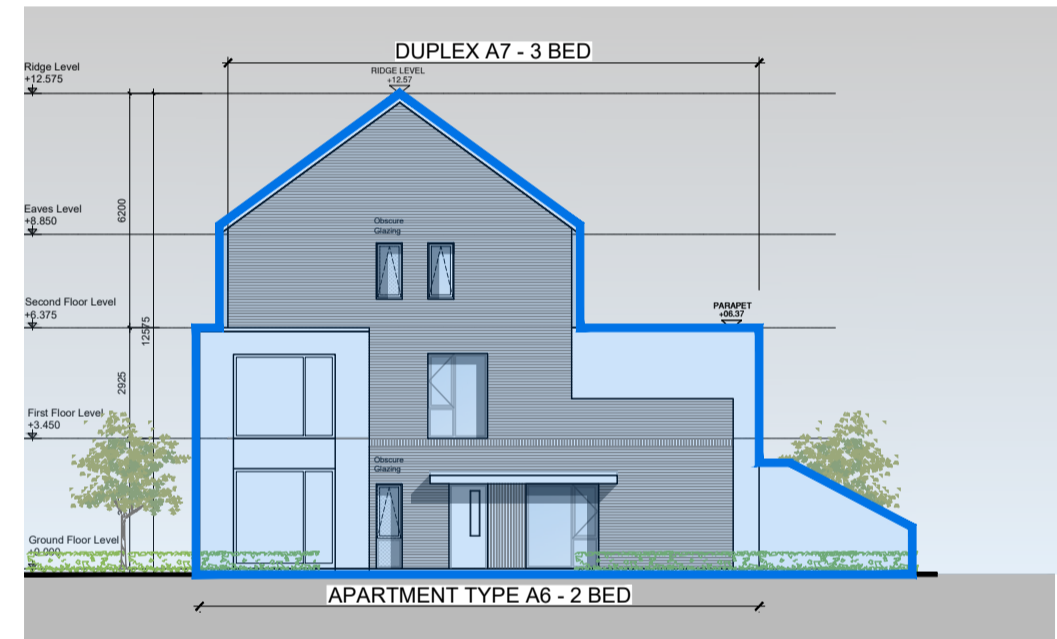
PHASE 2



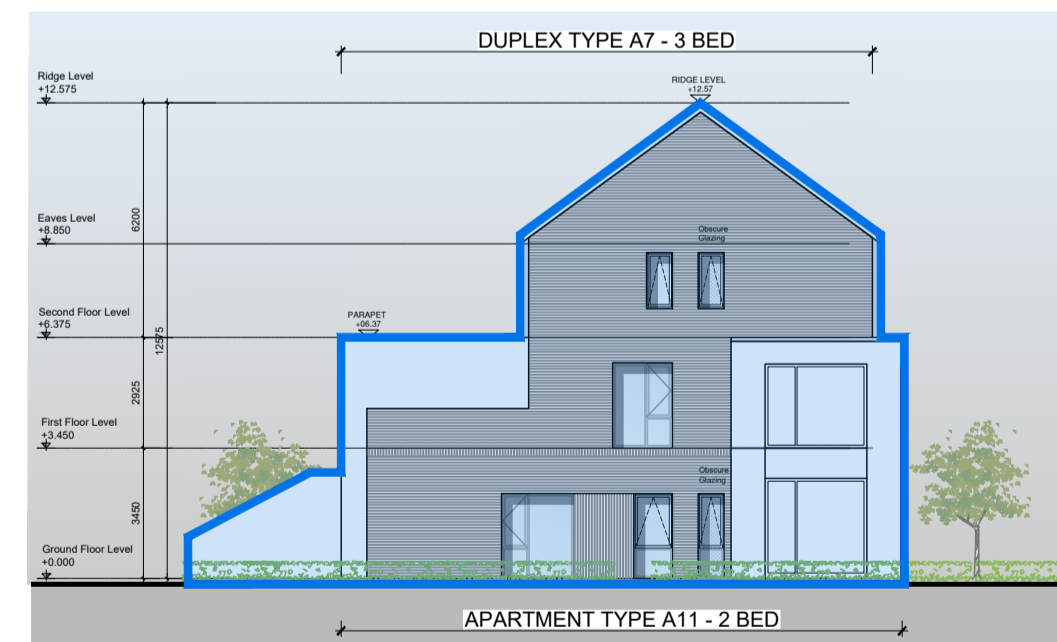
SOUTH-EAST ELEVATION Scale 1:200



NORTH-WEST ELEVATION Scale 1:200



SOUTH-WEST ELEVATION Scale 1:200

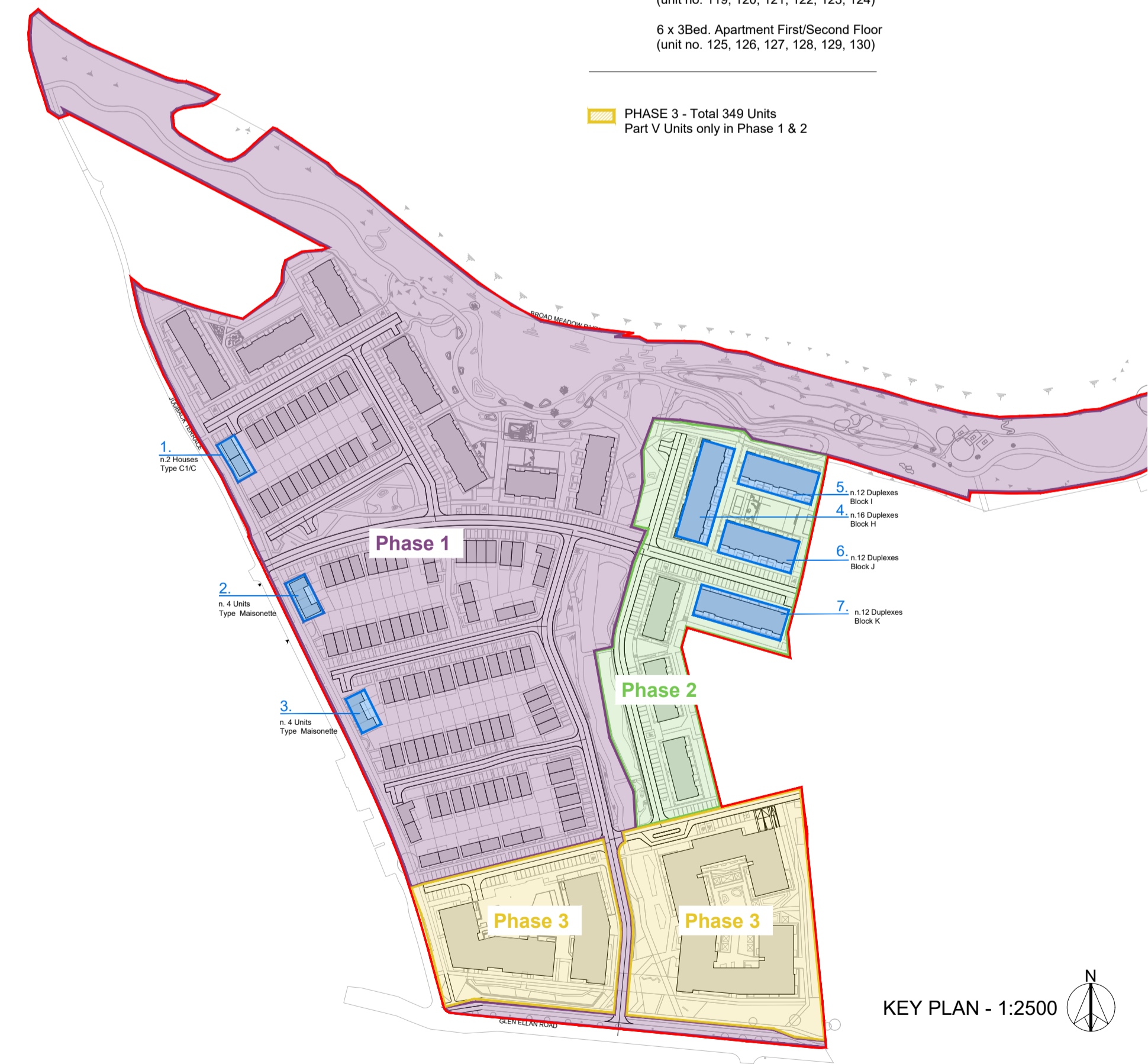


NORTH-EAST ELEVATION Scale 1:200

GENERAL NOTES

THIS DRAWING TO BE READ IN CONJUNCTION WITH ARCHITECT'S DRAWINGS, CONSULTANT ENGINEER'S DRAWINGS AND SPECIFICATIONS, AND LANDSCAPE ARCHITECT'S DRAWINGS AND SPECIFICATIONS.

- Part V - Units Outlined in Blue
 - Phase 1 - 196 Units (n.10 for Part V)
 - Phase 2 - 76 Units (n.52 for Part V)
 - Phase 3 - 349 Units (no Part V units)
- Overall Development n.621 units
 Min 10% requirement for Part V
 n.62 Units Total provided
- | | |
|-------|------|
| 1 Bed | n.8 |
| 2 Bed | n.25 |
| 3 Bed | n.28 |
- PHASE 1 - Total 196 Units (n.10 for Part V)
 - HOUSES TYPE C1-C
 2 x 3Bed. Houses (2 Storey)
 (Unit no. 117 and 118)
 - MAISONETTE
 8 x 1 Bed. Apartment
 (Unit no. 53,54,55,56,90,91,92,93,94)
 - PHASE 2 - Total 76 Units (n.52 for Part V)
 - DUPLEX BLOCK H
 8 x 2Bed. Apartment Ground Floor
 (unit no. 79, 80, 81, 82, 83, 84, 85, 86)
 8 x 3Bed. Apartment First/Second Floor
 (unit no. 87, 88, 89, 90, 91, 92, 93, 94)
 - DUPLEX BLOCK I
 6 x 2Bed. Apartment Ground Floor
 (unit no. 95, 96, 97, 98, 99, 100)
 6 x 3Bed. Apartment First/Second Floor
 (unit no. 101, 102, 103, 104, 105, 106)
 - DUPLEX BLOCK J
 6 x 2Bed. Apartment Ground Floor
 (unit no. 107, 108, 109, 110, 111, 112)
 6 x 3Bed. Apartment First/Second Floor
 (unit no. 113, 114, 115, 116, 117, 118)
 - DUPLEX BLOCK K
 6 x 2Bed. Apartment Ground Floor
 (unit no. 119, 120, 121, 122, 123, 124)
 6 x 3Bed. Apartment First/Second Floor
 (unit no. 125, 126, 127, 128, 129, 130)
 - PHASE 3 - Total 349 Units
 Part V Units only in Phase 1 & 2

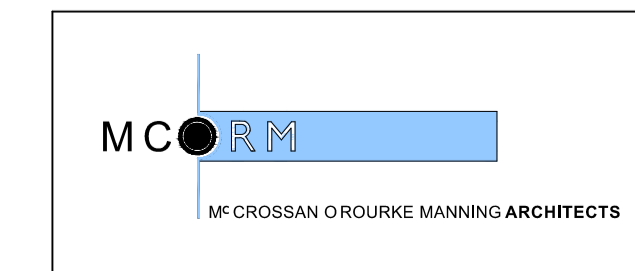


KEY PLAN - 1:2500

NOTES:

DO NOT SCALE FROM DRAWINGS. WORK TO FIGURED DIMENSIONS ONLY. ARCHITECT TO BE NOTIFIED OF ALL DISCREPANCIES.

CLIENT:		REVISIONS	
DATE	DESCRIPTION	DATE	No.



PROJECT TITLE:	DATE:	DRAWN BY:
SHD AT HOLYBANKS, SWORDS	Mar'22	IDF
DRAWING TITLE:	SCALE:	REVISION:
Part V Provision	1:200@A1	
Phase 2 - Sheet 2 of 5		
1 Grantham Street, Dublin 8, D08 A8P9, Ireland. Tel: 01-4787870 Fax: 01-4787811 E-Mail: sac@mcorm.com	JOB NO:	DRAWING NO:
	19022	PL59